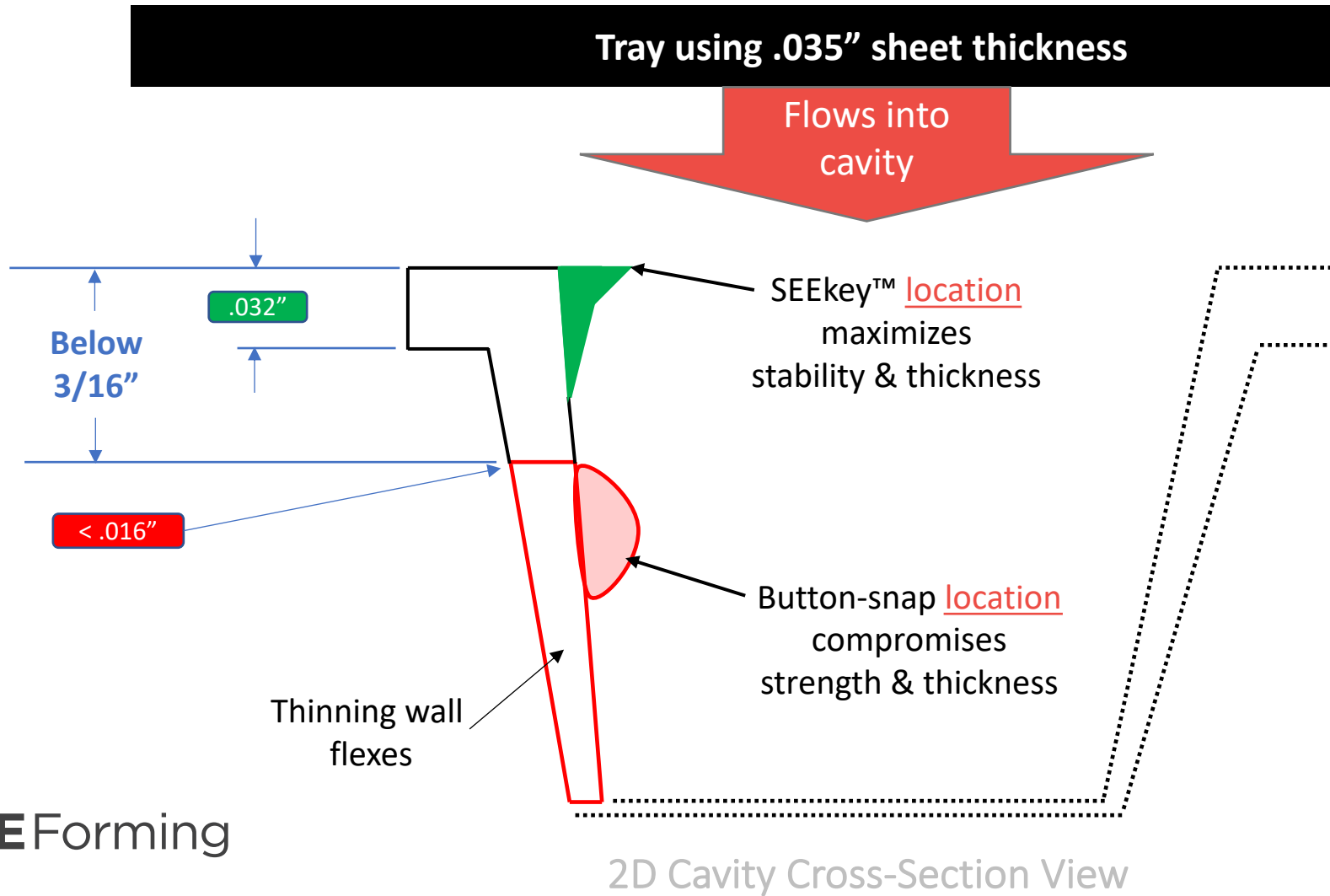


# Why A SEEkey™ Tray Use Less Plastic

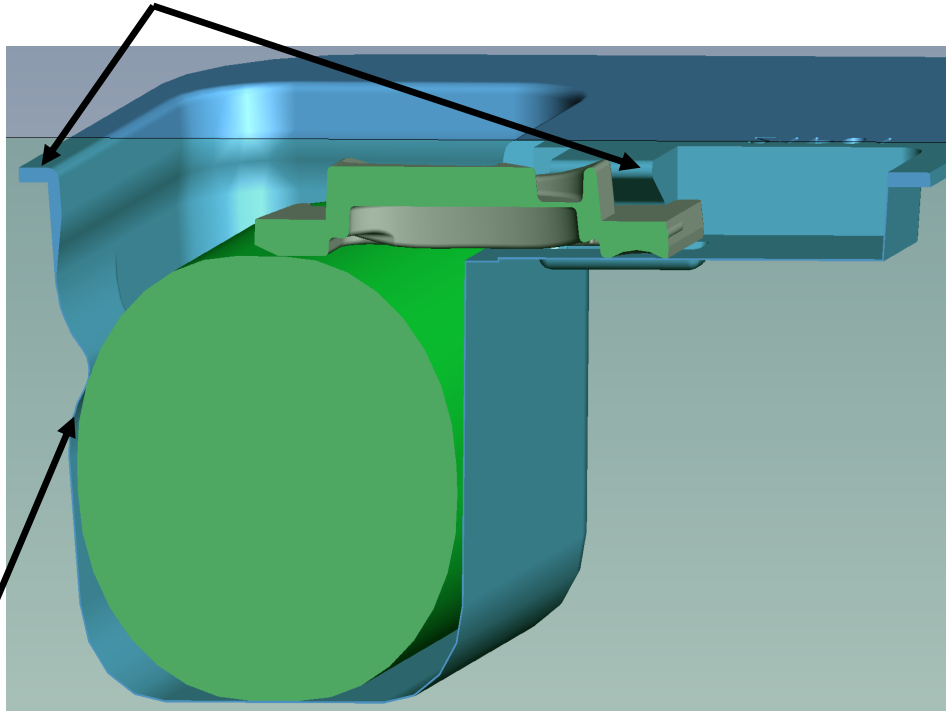
Location is “key”



# Why A SEEkey™ Tray Use Less Plastic

## Location is “key”

- ✓ Thickest area of tray
- ✓ Limited plastic stretch
- ✓ Outside of device cavity



- ❑ Thin, flexible wall
- ❑ Inside device cavity

3D Cavity Cross-Section View

## SEEkey Holder

**.035"** @ 93% = **.033"**

.030" @ 93% = .028"

.025" @ 93% = .023"

.020" @ 93% = .019"

.015" @ 93% = .014"

## Snap-Lock

**.035"** @ 31% = **.011"**

.030" @ 31% = .009"

.025" @ 31% = .008"

.020" @ 31% = .006"

.015" @ 31% = .005"

Tray using .035" sheet thickness

